

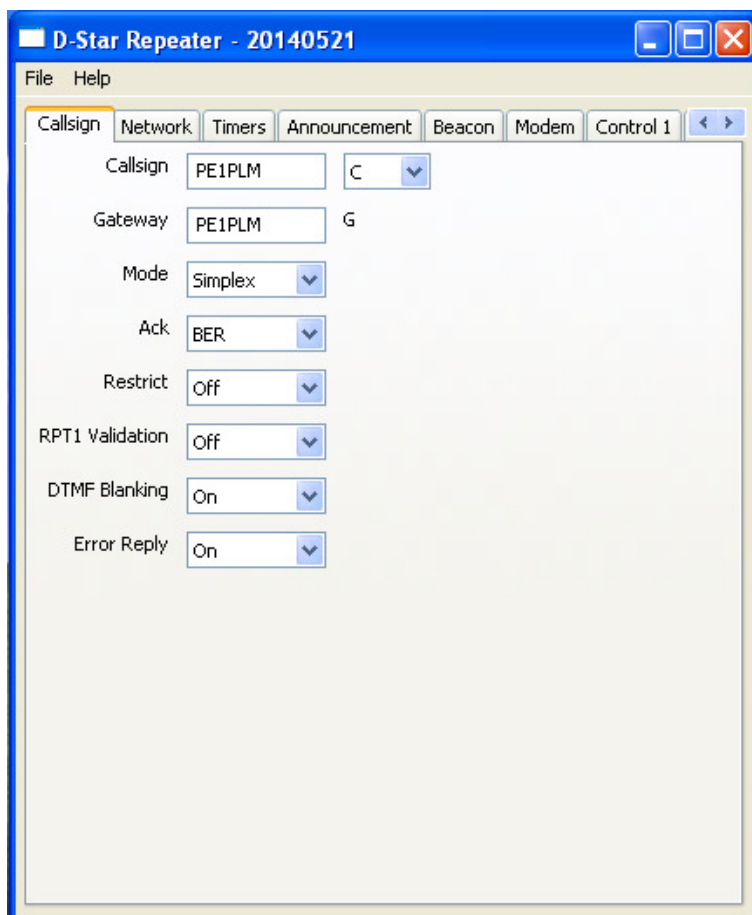
DVMEGA GMSK node adapter

Installation manual

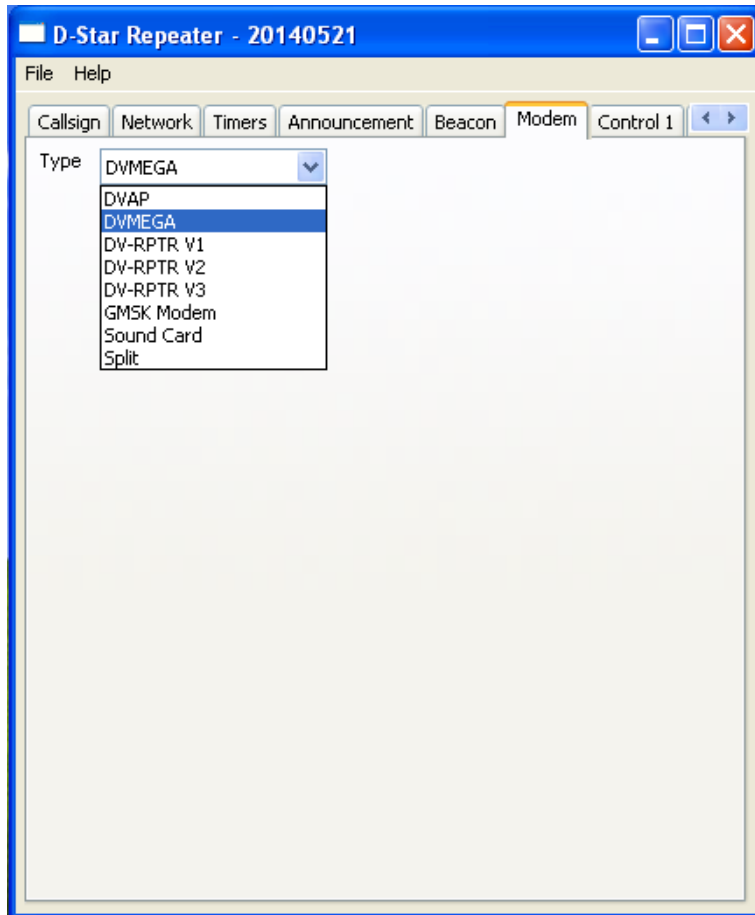
Setting the D-Star repeater software.

It is recommended that D-Star repeater version 20140208 or later to use.

- Note to the extension set to the same gateway software that callsign extension.
- Mode should be set to simplex for a hotspot and duplex if you run a repeater.
- Further settings can be freely set on or off.

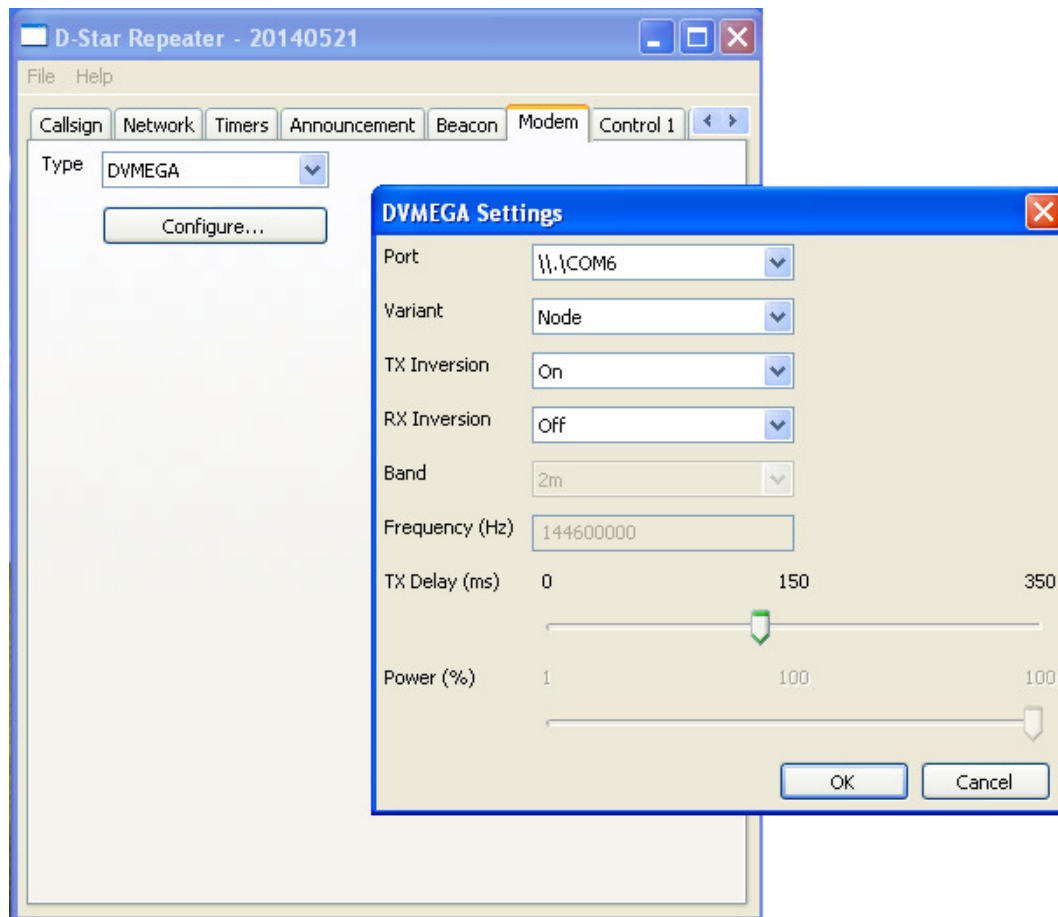


- Choose DVMEGA with modem settings.



- Select the port that is connected to the DVMEGA. In the case of a computer with Windows, select a COM port. Is the connected host a Raspberry PI then choose /dev/tty/ACM0.

- Set Version to Node, RX and TX inversion depend on the type of radio used.



- Make sure you save the changes before the Panel is closed.
- Restart PC or Raspberry.
- The hotspot or repeater is now ready for use.